



SmartPlus™  
**6-PIN CBS**  
centrifugal brake system

Speed Spool Bait Cast reels are designed to be **Lighter, Faster and Stronger**

Driven by innovation – Fueled with Passion  
**Feel the Difference!**

**BBI SPEED SPOOL™**

**Reel Specifications**

Model	Weight	Gear Ratio	Line Capacity	IPT
BB1	7.1 OZ.	5.1:1	160/12 LB.	21"
BB1L	7.1 OZ.	5.1:1	160/12 LB.	21"
BB1HZ	7.2 OZ.	6.4:1	160/12 LB.	28"
BB1HZL	7.2 OZ.	6.4:1	160/12 LB.	28"
BB1SHZL	7.2 OZ.	7.1:1	160/12 LB.	31"
BB1SHZ	7.2 OZ.	7.1:1	160/12 LB.	31"

**FEATURES:**

- One-piece die cast aluminum frame
- Carbon composite drag system
- Smart Plus 6-Pin Centrifugal Braking System
- Audible click, bowed aluminum metal star drag
- 10 bearing system
- Machined forged aluminum spool
- Extended bowed aluminum handle

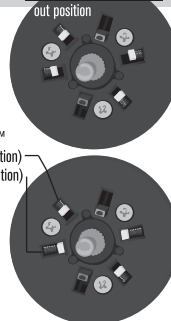
**Factory Setting and Guidelines**

The SmartPlus™ 6-Pin Centrifugal Brake System in your new BB1 Series reel was pre-set at the factory with 4 SmartPlus™ pins on. This is the recommended setting for casting lighter baits weighing 1/2 oz. or less. For optimum control and distance when casting baits heavier than 1/2 oz., we suggest changing the setting to 2 SmartPlus™ pins on (out position) and 2 off (in position). The two blue Speed Pins can also be activated when additional braking force is needed to prevent backlash.

Changing brake settings is easy and is detailed in the Maintenance and Care section of your Owner's Manual (see fig 1.). Refer to the chart below for factory recommended SmartPlus™ pin settings for the more popular bait weights;

Bait Weight	3/16 oz.	¼ oz.	3/8 oz.	½ oz.	5/8 oz.	¾ oz.	1 oz.
Smart Plus Pin Setting	4 Pins On	4 Pins On	4 Pins On	4 Pins On	2 Pins On	2 Pins On	2 Pins On

**Factory Setting**



**Designed Performance**

Our new bait-cast reel by Lew's® is designed for performance and functionality. From the way it conforms to your hand, to the way it reacts crisply and effortlessly to your command, you'll know the minute you grab onto the Speed Spool® that you've got a quality reel.

Your Speed Spool® reel exploits several new developments which will allow you to set yourself apart from the competition.

**One-piece Die Cast Aluminum Frame**

Your Speed Spool® reel utilizes a one-piece all aluminum frame. So you'll never have to worry about frame twisting or torquing.

**Lightweight Machined Aluminum Spool**

Machined Aluminum Spool

The spool on your Lew's® reel has been engineered to maximize casting distance. Double anodized to withstand oxidation and abrasion, this lightweight machined forged U shaped large capacity aluminum spool will allow you to propel your lure farther than the competition - and you'll have a greater degree of control with less standing between you and the fish.

**Muti-Stop Anti-Reverse**

**10 Bearings System**

The BB1 and BB1L features double shielded ball bearings and 24-point Multi-Stop Anti-Reverse. Multi-stop anti-reverse will disperse the point of impact from hard hook setting thus protecting and extending the life of the gears. The Multi-Stop Anti-Reverse allows greater sensitivity to be transferred through the reel into your hand.

**Zero Anti-Reverse Bearing**

The BB1HZ, BB1SHZ, BB1HZL, and BB1SHZL features double shielded ball bearings and Zero Anti-Reverse. The Zero Anti-Reverse system stops the reel handle from spinning backward when in gear.

**SmartPlus™ 6-Pin Centrifugal Brake System**

SmartPlus™  
**6-PIN CBS**  
centrifugal brake system

Your new BB1 Speed Spool® incorporates the latest reel technologies with the Lew's® SmartPlus™ 6-Pin Centrifugal Braking System for unmatched casting distance and backlash control. This system features four spring-loaded SmartPlus pins (white) and two Speed pins (blue), each capable of being turned "on" (out position) or "off" (in position) according to angler needs and fishing conditions. Our spring-loaded SmartPlus pins automatically back off the applied brake resistance as the cast slows, offering ideal control for most typical fishing situations. For more braking power, such as when casting light lures or into the wind, the Speed pins can be engaged throughout the entire cast. Use your fingernail to adjust each brake, listening for the "click" as it goes into our PosiLock™ setting of on or off. The Lew's® Speed Spool Quick Release side plate mechanism allows easy access to the SmartPlus™ Centrifugal Braking System.

**Bowed 95mm Aluminum Cranking Handle**

Our 95mm bowed aluminum cranking handle will give you all the cranking power you need. The Lew's custom Soft Touch contoured paddle is an added bonus known for its comfortable fit and ease for all day fishing.



One Year Limited Warranty

Lew's® Warrants its products<sup>1</sup> to withstand normal<sup>2</sup> use for the purpose designed and intended when manufactured for a period of one (1) year from the original retail sale date to the original retail consumer. Lew's® will at its option repair or replace<sup>3</sup> Lew's® products when required for the warranty period and return<sup>4</sup> the product to the owner at no additional<sup>5</sup> cost to the owner.

<sup>1</sup>Numerous products have been manufactured under variations of the Lew's® name and under the Lew's® Logo by multiple businesses over the past 50 years. This warranty is specifically for products manufactured on behalf of Lew's® of Springfield, Missouri USA since January 1, 2010. Lew's® products manufactured by or on behalf of other entities prior to January 1, 2010 are not covered by this warranty. In all circumstances, this Warranty is Limited in Value to the original retail value of the product and is limited to actual damage to the Lew's® product and only the Lew's® product. <sup>2</sup>Loss of a product, and loss/damage of a product or parts due to the attempted repair or servicing of a Lew's® product by any person or business other than Lew's® or Lew's® Authorized Warranty Service Agent, and damage caused by or resulting from abuse, misuse, lack of recommended maintenance, accident, acts of God, and shipping damages occurring in transit to Lew's® or Lew's® Authorized Agent are outside the scope of Lew's® Limited Warranty and will be repaired through Lew's® after warranty services at the expense of the consumer. <sup>3</sup>Any products replaced by Lew's® will be new or remanufactured by a Lew's® Authorized Agent with the same or next model upgrade product. <sup>4</sup>Lew's® will return warranted products to the consumer by reasonable means as determined by Lew's®. <sup>5</sup>Express or expedited services are the responsibility of the consumer as is sending the product to Lew's® or Lew's® Authorized Agent, for Warranty Service. Lew's® and Lew's® Service Agents as authorized by Lew's® are the sole agents authorized to repair or replace Lew's® products under the terms of this warranty. Only written changes by an officer of Lew's® can alter the terms or conditions of this warranty.

This warranty gives you specific legal rights including additional rights extended by some states which do not allow certain exclusions and limitations. Any action brought against Lew's® for the purpose of settling a warranty dispute shall be brought and litigated in the State of Missouri, County of Greene.

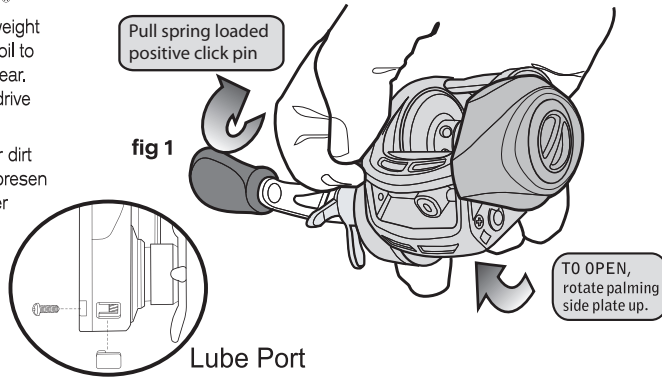
Lew's® 2253 E Bennett, Springfield, MO 65804 Phone 1-417-881-LEWS (5397) FAX: 1-417-881-5387

Maintenance and Care

To remove the plating side plate, loosen screw, pull plunger back then rotate plating side plate up. When applying lubricant to your Speed spool® reel, avoid using multi-purpose oil. Use lightweight oils or greases made for fishing reels. Apply oil to all bearings, the crank shaft, and the worm gear. Apply grease to the bushings, pinion gears, drive gears, and crank gears.

After usage your reel should be inspected for dirt or sand and cleaned if excessive buildup is present. If your reel has come in contact with saltwater it is important to flush all parts with water, dry and re-lubricate your reel. Through diligent cleaning and maintenance your Lew's® reel will provide you with years of reliability and sound performance

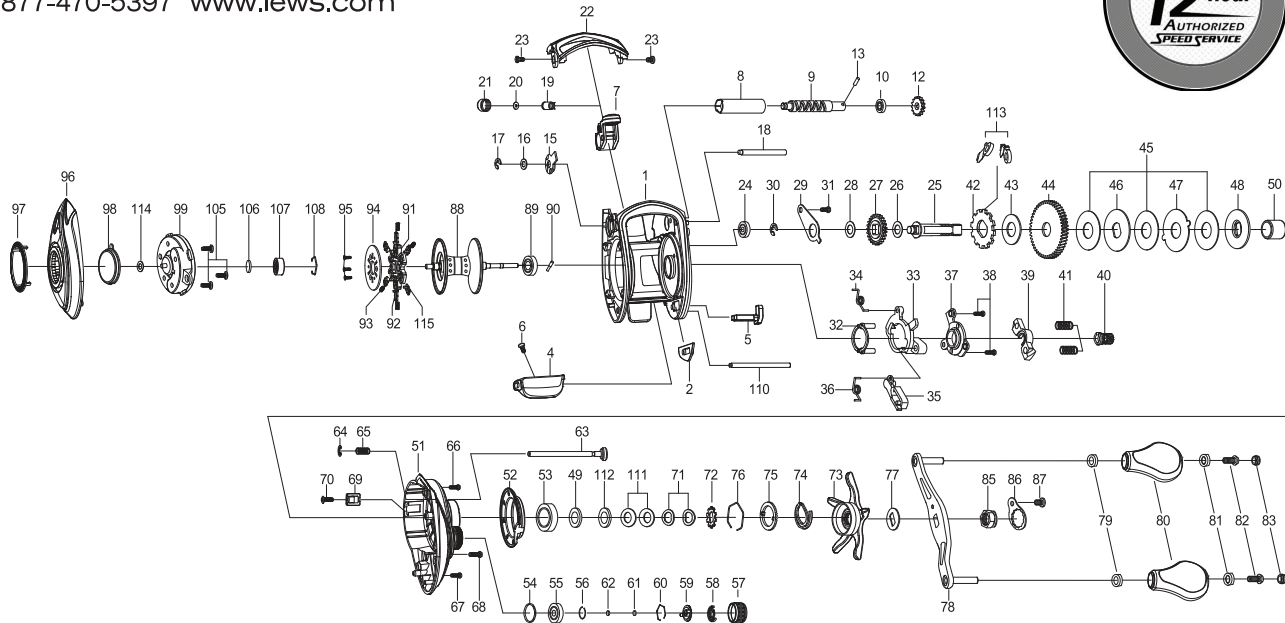
fig 1 To remove side cover unscrew side-plate screws pry front cover away from body to access components



For professional cleaning and maintenance send your reel postage prepaid to:

LEW'S® 2253 E. Bennett St. Springfield, MO 65804

877-470-5397 www.lews.com



Key #	Part Name	Key #	Part Name	Key #	Part Name
1	FRAME	39	PINION YOKE	74	CLICKER
2	CLUTCH BAR PLATE	40	PINION GEAR	75	CLICK PLATE
4	CLUTCH BAR	41	PINION YOKE SPRING(*2)	76	CLICK PLATE RETAINER
5	CLUTCH LINK	42	RATCHET	77	HANDLE WASHER
6	CLUTCH BAR SCREW	43	RATCHET WASHER	78	HANDLE ASSEMBLY
7	LEVEL WIND ASSEMBLY	44	DRIVE GEAR	79	BALL BEARING (*2)
8	PIPE	45	DRAG WASHER (L*3)	80	HANDLE KNOB (*2)
9	WORM SHAFT	46	DRAG WASHER (D1)	81	BALL BEARING (*2)
10	BALL BEARING	47	DRAG WASHER (A)	82	HANDLE KNOB SCREW (*2)
12	IDLER(S)	48	DRAG WASHER (D2)	83	HANDLE KNOB CAP (*2)
13	WORM SHAFT PIN	49	SLEEVE WASHER(OPTIONAL)	85	HANDLE NUT
15	WORM SHAFT BUSHING (B)	50	BUSH	86	HANDLE NUT RETAINER
16	WORM SHAFT WASHER(OPTIONAL)	51	RIGHT SIDE COVER ASSEMBLY	87	HANDLE NUT RETAINER SCREW
17	E-RING	52	RIGHT SIDE COVER TRIM	88	SPOOL ASSEMBLY
18	PILLAR (B)	53	BALL BEARING	89	BALL BEARING
19	LEVEL WIND PIN	54	O-RING	90	PIN
20	SPACER(OPTIONAL)	55	BALL BEARING	91	BRAKE HOLDER
21	LEVEL WIND NUT	56	C-RING	92	BRAKE SHOE - A (*4)
22	FRONT COVER	57	CAST CONTROL CAP	93	BRAKE SHOE SPRING (*4)
23	FRONT COVER SCREW (*2)	58	CLICKER	94	BRAKE HOLDER PLATE
24	BALL BEARING	59	CLICK PLATE	95	BRAKE HOLDER PLATE SCREW(*2)
25	CRANK SHAFT	60	CLICK PLATE RETAINER	96	PALM SIDE COVER ASSEMBLY
26	IDLER(L) WASHER (A)	61	TENSION WASHER	97	PALM SIDE COVER TRIM
27	IDLER(L)	62	SPOOL SPACER (B)	98	DECORATOR
28	IDLER(L) WASHER (B)	63	LOCKING PIN	99	SPOOL COVER ASSEMBLY
29	BEARING PLATE	64	E-RING	105	SPOOL COVER SCREW (*3)
30	E-RING	65	LOCKING PIN SPRING	106	SPOOL SPACER
31	BEARING PLATE SCREW	66	GEAR SIDE COVER SCREW (A)	107	BALL BEARING
32	YOKE HOLDER	67	GEAR SIDE COVER SCREW (B)	108	BEARING RETAINER
33	CLUTCH CAM	68	GEAR SIDE COVER SCREW (C)	110	PILLAR - A
34	CLUTCH SPRING	69	LUBE PORT CAP	111	DRAG SPRING WASHER (B*2)
35	KICK LEVER	70	LUBE PORT CAP SCREW	112	DRAG SPACER
36	KICK LEVER SPRING	71	DRAG SPRING WASHER (A*2)	113	STOPPER ASSEMBLY (*2)
37	CAM PLATE	72	CLICK HOLDER	114	DECORATOR WASHER(OPTIONAL)
38	CAM PLATE SCREW(*2)	73	STAR DRAG ASSEMBLY	115	BRAKE SHOE - B (*2)