



TEAM LEW'S[®] PRO-TI SPEED SPOOL[®] SLP

TLPT1SH

HS
7.5:1
HIGH SPEED



Reel Specifications

Model	Weight (oz.)	Line Capacity (yd./lb.)	Braid Capacity (yd./lb.)	Gear Ratio	RPT*
TLPT1SH	6.3	120/12	120/50	7.5:1	30"

*Recovery per turn.

FEATURES:

- Strong one-piece aluminum SLP frame and sideplates with Titanium deposition finish
- Aircraft-grade double anodized Duralumin drilled and chamfered U-shape 32mm spool
- Hard aluminum alloy Speed Gears, cut on Hamai CNC gear hobbing machine
- Premium 11-bearing system with double-shielded stainless steel ball bearings and Zero Reverse one-way clutch bearing
- Externally adjustable 6-pin, 27 position, QuietCast™ adjustable centrifugal braking system (ACB)
- Double anodized aluminum spool tension adjustment with audible click
- Rugged carbon fiber drag system provides up to 20 lbs. of drag power
- Bowed lightweight 95MM carbon fiber handle with Winn Dri-Tac knobs
- Double anodized aluminum drag star with audible click adjustment
- Titanium-coated zirconia line guide
- Exclusive patented Speed Dial line indicator and patented Speed Keeper® hook keeper

ATTENTION BRAIDED LINE USERS!

If your Lew's® Baitcast reel has pre-drilled holes in the spool, you may tie your braid directly to the spool, by passing the braid thru the provided holes and tying a uni-knot.

If your Lew's baitcast reel does not have pre-drilled holes in the spool, you will need to first tie on and spool at least 20 revolutions of monofilament line, and then tie your braided line to the monofilament line, with either a back-to-back uni-knot or an Albright knot.

Continue to spool your reel as normal, keeping strong tension on the line to ensure the line is firmly wound onto the spool to keep from "digging in" to underlying line layers when pressure is put on the line from fighting fish.

FAILURE TO PROPERLY SPOOL BRAIDED LINE ONTO YOUR REELS SPOOL WILL RESULT IN LINE SLIPPAGE, AND THE IMPRESSION YOUR DRAG IS NOT WORKING PROPERLY.

Performance — Right out of the Box!

Your Speed Spool® SLP reel is designed for performance and functionality. From the way it conforms to your hand, to the way it reacts crisply and effortlessly to your command, you'll know the minute you grab onto your Speed Spool® SLP that you've got a quality reel.

Your Speed Spool SLP reel exploits several new developments which will allow you to set yourself apart from the competition.

One-piece Aluminum Frame and Sideplates

Your Speed Spool reel utilizes a one-piece all aluminum frame and sideplates with Titanium Deposition finish, making the Team Lew's Pro Titanium the strongest Lew's reel ever built.

Speed Gears

Hard aluminum alloy Speed Gears are cut on the finest Hamai CNC gear hobbing machines resulting in precise gear interface for smooth cranking power.

Zero Reverse Bearing

The handle on your Speed Spool reel will only rotate forward for rock solid hook setting. When you release the handle, it will hold its position because of the Zero Reverse® bearing, never losing an inch on your catch; an invaluable property to have when you're pulling it in.

Externally 6-Pin QuietCast Adjustable Centrifugal Brake System (ACB)

The SpeedCast® Quite Cast Adjustable Centrifugal Brake System delivers an extreme range of braking power from free spool to maximum by simply clicking its external dial to choose among 27 variable settings. The ACB system puts you in control of your casts, perfectly aligning brake power to conditions. With this system you will have quiet and smooth casting control over light lures, while maximizing casting distance with all lures.

Cast Control System

A second feature exists to prevent backlash, the Cast Control System. The adjustment knob is found next to the star drag. This function saddles the spool shaft with steady pressure in order to stabilize spool speed.

To calibrate the system reel your lure in until it rests on the tip of the rod, then tighten the knob until taut. Depress the thumb bar, and holding the rod horizontally loosen the knob slowly until the lure begins to descend. The spool should continue to spin after the lure contacts the ground, but should not complete more than one full rotation. If the spool does not continue to spin, the knob is too tight.

If the spool completes more than one rotation, the knob is too loose. Repeat until you have achieved the desired results.

Bowed 95mm Carbon Handle

The 95mm bowed handle will give you all the cranking power you need. The comfortable Winn Dri-Tac knobs provide a sure grip for all day fishing performance.



TEAM LEW'S® PRO-TI SPEED SPOOL® SLP TLPT1SH

One Year Limited Warranty For Warranty information and registration go to lews.com

Maintenance and Care

When applying lubricant to your Speed Spool® reel, avoid using multi-purpose oil. Use lightweight oils or greases made for fishing reels. Apply oil to all bearings, the crankshaft and the worm gear. Apply grease to the bushings, pinion gears, drive gears, and crank gears.

After usage, your reel should be inspected for dirt or sand and cleaned if excessive build-up is present. If your reel has come in contact with saltwater it is important to flush all parts with water, dry and re-lubricate your reel. Through diligent cleaning and maintenance your Lew's® reel will provide you with years of reliability and sound performance.

Fig. 1 To remove palming sideplate slide down level and pull sideplate off.

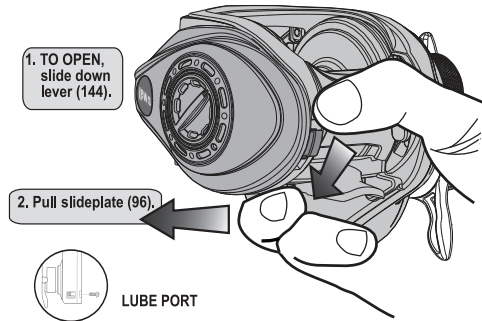
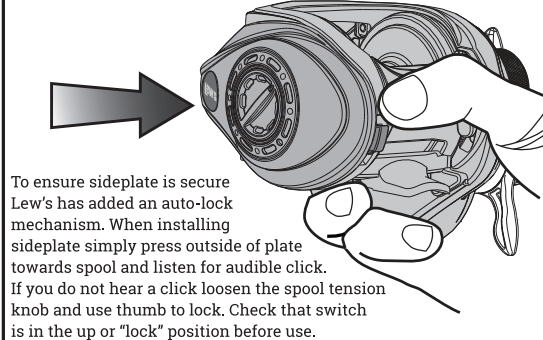


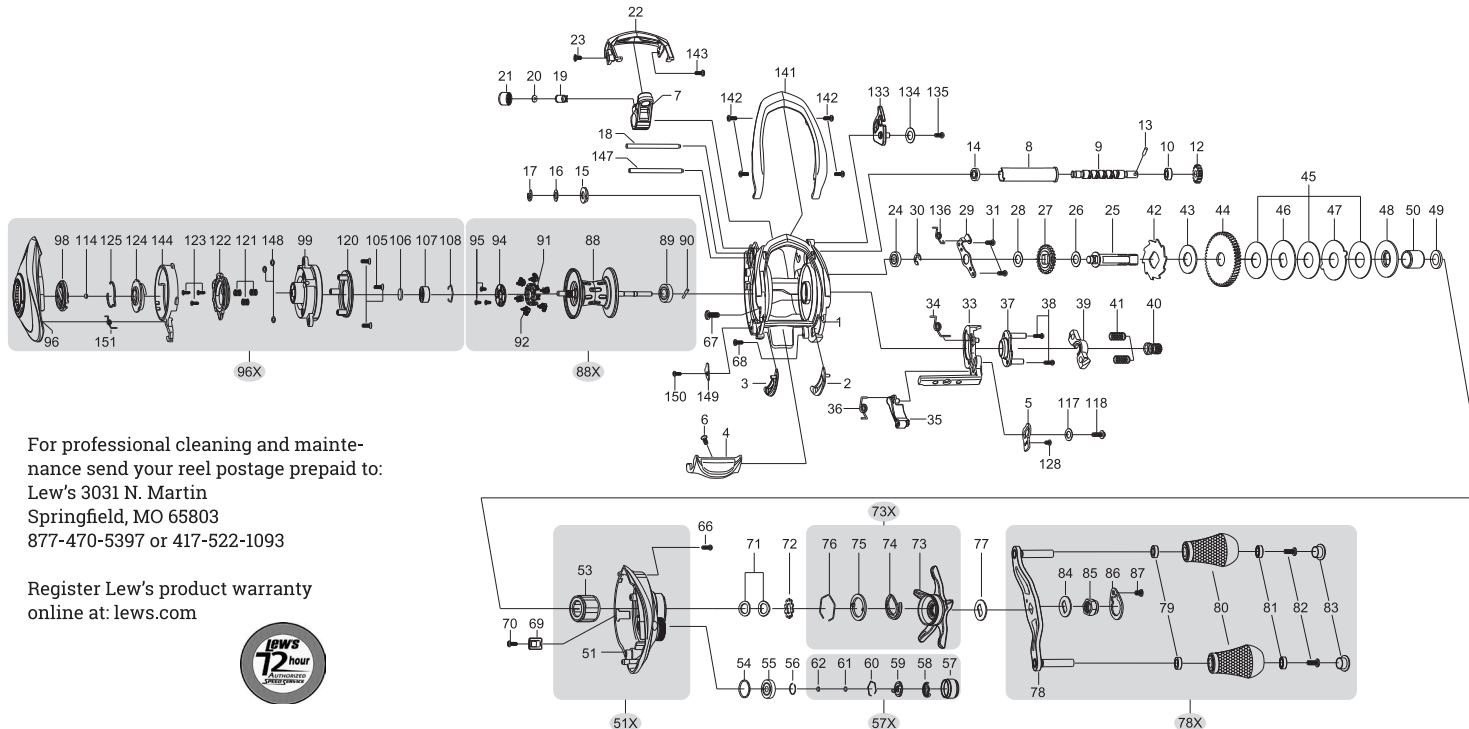
Fig. 2 SLP Sideplate Auto-Lock



Lew's warrants its products¹ to withstand normal² use for the purpose designed and intended when manufactured for a period of one (1) year from the original retail sale date to the original retail consumer. Lew's will at its option repair or replace³ Lew's products when required for the warranty period and return⁴ the product to the owner at no additional⁵ cost to the owner. 1Numerous products have been manufactured under variations of the Lew's name and under the Lew's Logo by multiple businesses over the past 50 years. This warranty is specifically for products manufactured on behalf of Lew's of Springfield, Missouri USA since January 1, 2010. Lew's products manufactured by or on behalf of other entities prior to January 1, 2010 are not covered by this warranty. In all circumstances, this Warranty is Limited in Value to the original retail value of the product and is limited to actual damage to the Lew's product and only the Lew's product. 2Loss of a product, and loss/damage of a product or parts due to the attempted repair or servicing of a Lew's product by any person or business other than Lew's or Lew's Authorized Warranty Service Agent, and damage caused by or resulting from abuse, misuse, lack of recommended maintenance, accident, acts of God, and shipping damages occurring in transit to Lew's or Lew's Authorized Agent are outside the scope of Lew's Limited Warranty and will be repaired through Lew's® after warranty services at the expense of the consumer. 3Any products replaced by Lew's will be new or remanufactured by a Lew's Authorized Agent with the same or next model upgrade product. 4Lew's will return warranted products to the consumer by reasonable means as determined by Lew's. 5Express or expedited services are the responsibility of the consumer as is sending the product to Lew's or Lew's Authorized Agent, for Warranty Service. Lew's and Lew's Service Agents as authorized by Lew's are the sole agents authorized to repair or replace Lew's products under the terms of this warranty. Only written changes by an officer of Lew's can alter the terms or conditions of this warranty.

This warranty gives you specific legal rights including additional rights extended by some states which do not allow certain exclusions and limitations. Any action brought against Lew's for the purpose of settling a warranty dispute shall be brought and litigated in the State of Missouri, County of Greene.

Lew's 3031 N. Martin, Springfield, MO 65803 Phone: 877-470-5397 or 417-522-1093 FAX: 1-417-881-5387



Key#	Part Name	Key#	Part Name	Key#	Part Name
1	FRAME	44	DRIVE GEAR	85	HANDLE NUT
2	CLUTCH BAR PLATE-R	45	DRAG WASHER-L	86	HANDLE NUT RETAINER
3	CLUTCH BAR PLATE-L	46	DRAG WASHER-D1	87	HANDLE NUT RETAINER SCREW
4	CLUTCH BAR	47	DRAG WASHER-A	88	SPOOL
5	LINK PLATE	48	DRAG WASHER-D2	88X	SPOOL ASSEMBLY
6	CLUTCH BAR SCREW	49	SLEEVE WASHER(OPTIONAL)	89	BALL BEARING
7	LEVELWIND ASSEMBLY	50	SLEEVE	90	PIN
8	PIPE	51	GEAR SIDE COVER	91	BRAKE HOLDER
9	WORM SHAFT	51X	GEAR SIDE COVER ASSEMBLY	92	BRAKE SHOE
10	BALL BEARING	53	ONE WAY CLUTCH	94	BRAKE HOLDER PLATE
12	IDLER-S	54	O-RING	95	BRAKE HOLDER PLATE SCREW
13	WORM SHAFT PIN	55	BALL BEARING	96	PALM SIDE COVER
14	BALL BEARING	56	BEARING RETAINER	96X	PALM SIDE COVER ASSEMBLY
15	WORM SHAFT BUSHING-B	57	CAST CONTROL CAP	98	CONTROL DIAL
16	WORM SHAFT WASHER(OPTIONAL)	57X	CAST CONTROL CAP ASSEMBLY	99	SPOOL COVER
17	E-RING	58	CLICKER	105	SPOOL COVER SCREW
18	PILLAR	59	CLICK PLATE	106	SPOOL SPACER-A
19	LEVELWIND PIN	60	CLICK PLATE RETAINER	107	BALL BEARING
20	SPACER(OPTIONAL)	61	TENSION WASHER	108	BEARING RETAINER
21	LEVELWIND NUT	62	SPOOL SPACER-B	114	WASHER(OPTIONAL)
22	FRONT COVER	66	GEAR SIDE COVER SCREW-A	117	CLUTCH WASHER
23	FRONT COVER SCREW-A	67	GEAR SIDE COVER SCREW-B	118	CLUTCH SCREW
24	BALL BEARING	68	GEAR SIDE COVER SCREW-C	120	BRAKE PLATE HOLDER ASS'LY
25	CRANK SHAFT	69	LUBE PORT CAP	121	SLIDE CAM SPRING
26	IDLER-L WASHER-A	70	LUBE PORT CAP SCREW	122	SLIDE CAM-M
27	IDLER-L	71	DRAG SPRING WASHER	123	SLIDE CAM SCREW
28	IDLER-L WASHER-B	72	CLICK HOLDER	124	SLIDE CAM-M
29	BEARING PLATE	73	STAR DRAG	125	CLICK SPRING
30	E-RING	73X	STAR DRAG ASSEMBLY	128	LINK PLATE SCREW
31	BEARING PLATE SCREW	74	CLICKER	133	HOOK HOLDER
33	CLUTCH CAM	75	CLICK PLATE	134	HOOK HOLDER WASHER
34	CLUTCH SPRING	76	CLICK PLATE RETAINER	135	HOOK HOLDER SCREW
35	KICK LEVER	77	HANDLE WASHER	136	HOOK HOLDER SPRING
36	KICK LEVER SPRING	78	HANDLE	141	HOOD
37	CAM PLATE	78X	HANDLE ASSEMBLY	142	HOOD SCREW
38	CLUTCH CAM SCREW	79	BALL BEARING	143	FRONT COVER SCREW-B
39	PINION YOKE	80	HANDLE KNOB	144	LOCK LEVER
40	PINION GEAR	81	BALL BEARING	147	GUIDE PIN
41	PINION YOKE SPRING	82	HANDLE KNOB SCREW	149	SLIDEPLATE
42	RATCHET	83	HANDLE KNOB CAP	150	SLIDEPLATE SCREW
43	RATCHET WASHER	84	HANDLE WASHER	151	LOCK LEVER SPRING

For professional cleaning and maintenance send your reel postage prepaid to:
Lew's 3031 N. Martin
Springfield, MO 65803
877-470-5397 or 417-522-1093

Register Lew's product warranty online at: lews.com





TEAM LEW'S[®] PRO-TI SPEED SPOOL[®] SLP

TLPT1SHL



Reel Specifications

Model	Weight (oz.)	Line Capacity (yd./lb.)	Braid Capacity (yd./lb.)	Gear Ratio	RPT*
TLPT1SHL	6.3	120/12	120/50	7.5:1	30"

*Recovery per turn.

FEATURES:

- Strong one-piece aluminum SLP frame and sideplates with Titanium deposition finish
- Aircraft-grade double anodized Duralumin drilled and chamfered U-shape 32mm spool
- Hard aluminum alloy Speed Gears, cut on Hamai CNC gear hobbing machine
- Premium 11-bearing system with double-shielded stainless steel ball bearings and Zero Reverse one-way clutch bearing
- Externally adjustable 6-pin, 27 position, QuietCast™ adjustable centrifugal braking system (ACB)
- Double anodized aluminum spool tension adjustment with audible click
- Rugged carbon fiber drag system provides up to 20 lbs. of drag power
- Bowed lightweight 95MM carbon fiber handle with Winn Dri-Tac knobs
- Double anodized aluminum drag star with audible click adjustment
- Titanium-coated zirconia line guide
- Exclusive patented Speed Dial line indicator and patented Speed Keeper® hook keeper

ATTENTION BRAIDED LINE USERS!

If your Lew's® Baitcast reel has pre-drilled holes in the spool, you may tie your braid directly to the spool, by passing the braid thru the provided holes and tying a uni-knot.

If your Lew's baitcast reel does not have pre-drilled holes in the spool, you will need to first tie on and spool at least 20 revolutions of monofilament line, and then tie your braided line to the monofilament line, with either a back-to-back uni-knot or an Albright knot.

Continue to spool your reel as normal, keeping strong tension on the line to ensure the line is firmly wound onto the spool to keep from "digging in" to underlying line layers when pressure is put on the line from fighting fish.

FAILURE TO PROPERLY SPOOL BRAIDED LINE ONTO YOUR REELS SPOOL WILL RESULT IN LINE SLIPPAGE, AND THE IMPRESSION YOUR DRAG IS NOT WORKING PROPERLY.

Performance — Right out of the Box!

Your Speed Spool® SLP reel is designed for performance and functionality. From the way it conforms to your hand, to the way it reacts crisply and effortlessly to your command, you'll know the minute you grab onto your Speed Spool® SLP that you've got a quality reel.

Your Speed Spool SLP reel exploits several new developments which will allow you to set yourself apart from the competition.

One-piece Aluminum Frame and Sideplates

Your Speed Spool reel utilizes a one-piece all aluminum frame and sideplates with Titanium Deposition finish, making the Team Lew's Pro Titanium the strongest Lew's reel ever built.

Speed Gears

Hard aluminum alloy Speed Gears are cut on the finest Hamai CNC gear hobbing machines resulting in precise gear interface for smooth cranking power.

Zero Reverse Bearing

The handle on your Speed Spool reel will only rotate forward for rock solid hook setting. When you release the handle, it will hold its position because of the Zero Reverse® bearing, never losing an inch on your catch; an invaluable property to have when you're pulling it in.

Externally 6-Pin QuietCast Adjustable Centrifugal Brake System (ACB)

The SpeedCast® Quite Cast Adjustable Centrifugal Brake System delivers an extreme range of braking power from free spool to maximum by simply clicking its external dial to choose among 27 variable settings. The ACB system puts you in control of your casts, perfectly aligning brake power to conditions. With this system you will have quiet and smooth casting control over light lures, while maximizing casting distance with all lures.

Cast Control System

A second feature exists to prevent backlash, the Cast Control System. The adjustment knob is found next to the star drag. This function saddles the spool shaft with steady pressure in order to stabilize spool speed.

To calibrate the system reel your lure in until it rests on the tip of the rod, then tighten the knob until taut. Depress the thumb bar, and holding the rod horizontally loosen the knob slowly until the lure begins to descend. The spool should continue to spin after the lure contacts the ground, but should not complete more than one full rotation. If the spool does not continue to spin, the knob is too tight.

If the spool completes more than one rotation, the knob is too loose. Repeat until you have achieved the desired results.

Bowed 95mm Carbon Handle

The 95mm bowed handle will give you all the cranking power you need. The comfortable Winn Dri-Tac knobs provide a sure grip for all day fishing performance.



TEAM LEW'S[®] PRO-TI

SPEED SPOOL[®] SLP TLPT1SHL

One Year Limited Warranty For Warranty information and registration go to lews.com

Maintenance and Care

When applying lubricant to your Speed Spool[®] reel, avoid using multi-purpose oil. Use lightweight oils or greases made for fishing reels. Apply oil to all bearings, the crankshaft and the worm gear. Apply grease to the bushings, pinion gears, drive gears, and crank gears.

After usage, your reel should be inspected for dirt or sand and cleaned if excessive build-up is present. If your reel has come in contact with saltwater it is important to flush all parts with water, dry and re-lubricate your reel. Through diligent cleaning and maintenance your Lew's[®] reel will provide you with years of reliability and sound performance.

Fig. 1 To remove palming sideplate slide down level and pull slideplate off.

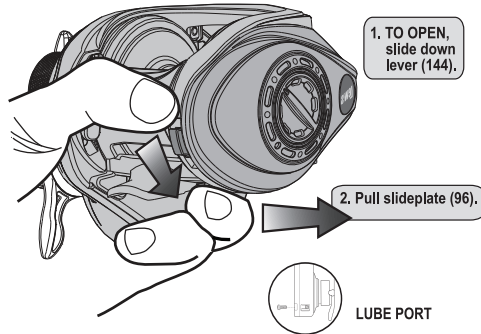
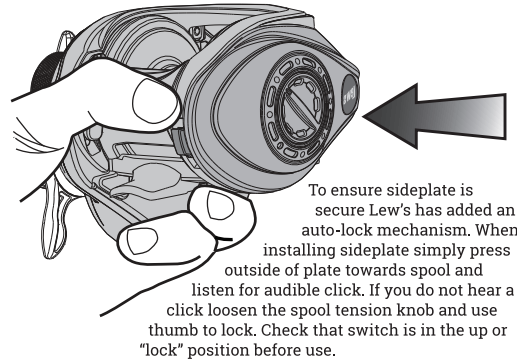


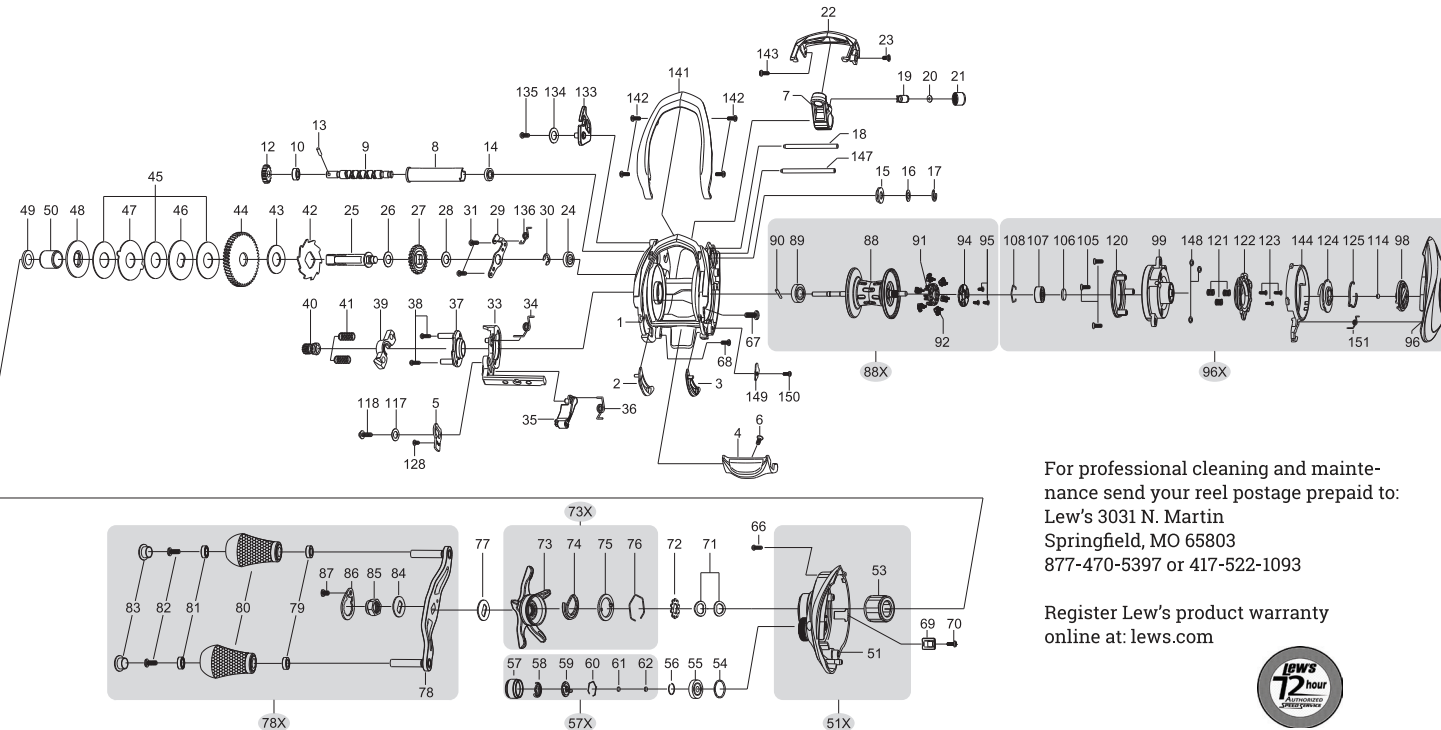
Fig. 2 SLP Sideplate Auto-Lock



Lew's warrants its products to withstand normal use for the purpose designed and intended when manufactured for a period of one (1) year from the original retail sale date to the original retail consumer. Lew's will at its option repair or replace Lew's products when required for the warranty period and return the product to the owner at no additional cost to the owner. Numerous products have been manufactured under variations of the Lew's name and under the Lew's Logo by multiple businesses over the past 50 years. This warranty is specifically for products manufactured on behalf of Lew's of Springfield, Missouri USA since January 1, 2010. Lew's products manufactured by or on behalf of other entities prior to January 1, 2010 are not covered by this warranty. In all circumstances, this Warranty is Limited in Value to the original retail value of the product and is limited to actual damage to the Lew's product and only the Lew's product. Loss of a product, and loss/damage of a product or parts due to the attempted repair or servicing of a Lew's product by any person or business other than Lew's or Lew's Authorized Warranty Service Agent, and damage caused by or resulting from abuse, misuse, lack of recommended maintenance, accident, acts of God, and shipping damages occurring in transit to Lew's or Lew's Authorized Agent are outside the scope of Lew's Limited Warranty and will be repaired through Lew's[®] after warranty services at the expense of the consumer. Any products replaced by Lew's will be new or remanufactured by a Lew's Authorized Agent with the same or next model upgrade product. Lew's will return warranted products to the consumer by reasonable means as determined by Lew's. Express or expedited services are the responsibility of the consumer as is sending the product to Lew's or Lew's Authorized Agent, for Warranty Service. Lew's and Lew's Service Agents as authorized by Lew's are the sole agents authorized to repair or replace Lew's products under the terms of this warranty. Only written changes by an officer of Lew's can alter the terms or conditions of this warranty.

This warranty gives you specific legal rights including additional rights extended by some states which do not allow certain exclusions and limitations. Any action brought against Lew's for the purpose of settling a warranty dispute shall be brought and litigated in the State of Missouri, County of Greene.

Lew's 3031 N. Martin, Springfield, MO 65803 Phone: 877-470-5397 or 417-522-1093 FAX: 1-417-881-5387



Key#	Part Name	Key#	Part Name	Key#	Part Name
1	FRAME	44	DRIVE GEAR	85	HANDLE NUT
2	CLUTCH BAR PLATE-R	45	DRAG WASHER-L	86	HANDLE NUT RETAINER
3	CLUTCH BAR PLATE-L	46	DRAG WASHER-D1	87	HANDLE NUT RETAINER SCREW
4	CLUTCH BAR	47	DRAG WASHER-A	88	SPOOL
5	LINK PLATE	48	DRAG WASHER-D2	88X	SPOOL ASSEMBLY
6	CLUTCH BAR SCREW	49	SLEEVE WASHER(OPTIONAL)	89	BALL BEARING
7	LEVELWIND ASSEMBLY	50	SLEEVE	90	PIN
8	PIPE	51	GEAR SIDE COVER	91	BRAKE HOLDER
9	WORM SHAFT	51X	GEAR SIDE COVER ASSEMBLY	92	BRAKE SHOE
10	BALL BEARING	53	ONE WAY CLUTCH	94	BRAKE HOLDER PLATE
12	IDLER-S	54	O-RING	95	BRAKE HOLDER PLATE SCREW
13	WORM SHAFT PIN	55	BALL BEARING	96	PALM SIDE COVER
14	BALL BEARING	56	BEARING RETAINER	96X	PALM SIDE COVER ASSEMBLY
15	WORM SHAFT BUSHING-B	57	CAST CONTROL CAP	98	CONTROL DIAL
16	WORM SHAFT WASHER(OPTIONAL)	57X	CAST CONTROL CAP ASSEMBLY	99	SPOOL COVER
17	E-RING	58	CLICKER	105	SPOOL COVER SCREW
18	PILLAR	59	CLICK PLATE	106	SPOOL SPACER-A
19	LEVELWIND PIN	60	CLICK PLATE RETAINER	107	BALL BEARING
20	SPACER(OPTIONAL)	61	TENSION WASHER	108	BEARING RETAINER
21	LEVELWIND NUT	62	SPOOL SPACER-B	114	WASHER(OPTIONAL)
22	FRONT COVER	66	GEAR SIDE COVER SCREW-A	117	CLUTCH WASHER
23	FRONT COVER SCREW-A	67	GEAR SIDE COVER SCREW-B	118	CLUTCH SCREW
24	BALL BEARING	68	GEAR SIDE COVER SCREW-C	120	BRAKE PLATE HOLDER ASS'LY
25	CRANK SHAFT	69	LUBE PORT CAP	121	SLIDE CAM SPRING
26	IDLER-L WASHER-A	70	LUBE PORT CAP SCREW	122	SLIDE CAM-M
27	IDLER-L	71	DRAG SPRING WASHER	123	SLIDE CAM SCREW
28	IDLER-L WASHER-B	72	CLICK HOLDER	124	SLIDE CAM-M
29	BEARING PLATE	73	STAR DRAG	125	CLICK SPRING
30	E-RING	73X	STAR DRAG ASSEMBLY	128	LINK PLATE SCREW
31	BEARING PLATE SCREW	74	CLICKER	133	HOOK HOLDER
33	CLUTCH CAM	75	CLICK PLATE	134	HOOK HOLDER WASHER
34	CLUTCH SPRING	76	CLICK PLATE RETAINER	135	HOOK HOLDER SCREW
35	KICK LEVER	77	HANDLE WASHER	136	HOOK HOLDER SPRING
36	KICK LEVER SPRING	78	HANDLE	140	HOOD
37	CAM PLATE	78X	HANDLE ASSEMBLY	142	HOOD SCREW
38	CLUTCH CAM SCREW	79	BALL BEARING	143	FRONT COVER SCREW-B
39	PINION YOKER	80	HANDLE KNOB	144	LOCK LEVER
40	PINION GEAR	81	BALL BEARING	147	GUIDE PIN
41	PINION YOKER SPRING	82	HANDLE KNOB SCREW	149	SLIDE PLATE
42	RATCHET	83	HANDLE KNOB CAP	150	SLIDE PLATE SCREW
43	RATCHET WASHER	84	HANDLE WASHER	151	LOCK LEVER SPRING

For professional cleaning and maintenance send your reel postage prepaid to:
Lew's 3031 N. Martin
Springfield, MO 65803
877-470-5397 or 417-522-1093

Register Lew's product warranty online at: lews.com

